



2 Finch Place

ST8 7RE

Offers Over £160,000



3



1



1



C



STEPHENSON BROWNE

A well-presented three-bedroom home offering versatile accommodation, modern features and excellent outdoor space, situated in the popular Brindley Ford area of Stoke-on-Trent, Staffordshire. The property benefits from new ground floor windows along with new front and rear doors, enhancing both comfort and energy efficiency.

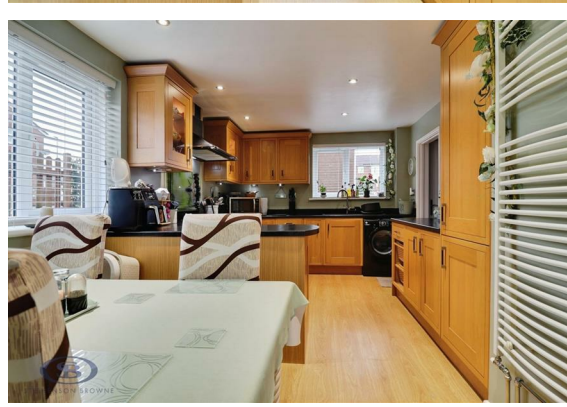
Internally, the ground floor comprises a small entrance hall, a bright and airy living room with large windows to both the front and rear allowing plenty of natural light, and a spacious kitchen diner offering plenty of cupboard and worktop space, fitted with a Cookmaster cooker along with integrated fridge freezer and dishwasher. The rear (back) door provides access out to the garden and also opens into the open understairs storage area, making it ideal for coats and shoes or with potential to be used as a compact utility space.

Upstairs, the property offers three bedrooms, two of which feature built-in storage/wardrobe cupboards. The landing provides access to a large airing/boiler cupboard, offering excellent additional storage. The family bathroom is fitted with a modern suite including a large walk-in shower.

Externally, the home enjoys a walled and very private rear garden, with a paved seating area and steps leading up to a lawned section. A side walkway provides access to both a side gate and rear gate, adding convenience. Beyond the garden there is off-road parking for two vehicles and a garage.

This property would make an ideal family home or first-time purchase, combining practical living space with a private garden and excellent parking facilities.

Council Borough: Stoke-On-Trent City Council
Tenure: Freehold
Council Tax Band: A



Ground Floor

Kitchen/Diner

10'1" x 17'10"

Living Room

9'9" x 19'1"

Garage

17'8" x 7'10"

First Floor

Bedroom One

11'5" x 11'11"

Bathroom

10'1" x 5'5"

Bedroom Two

9'9" x 10'2"

Wardrobe Cupboard (Bedroom 2)

4'0" x 1'10"

Bedroom Three

7'4" x 6'7"

Wardrobe Cupboard (Bedroom 3)

2'11" x 2'11"

Airing Cupboard

4'3" x 2'10"

Stephenson Browne AML Disclosure

Agents are required by law to conduct Anti-Money Laundering checks on all those buying a property. Stephenson Browne charge £49.99 plus VAT for an AML check per purchase transaction . This is a non-refundable fee. The charges cover the cost of obtaining relevant data, any manual checks that are required, and ongoing monitoring. This fee is payable in advance prior to the issuing of a memorandum of sale on the property you are seeking to buy.

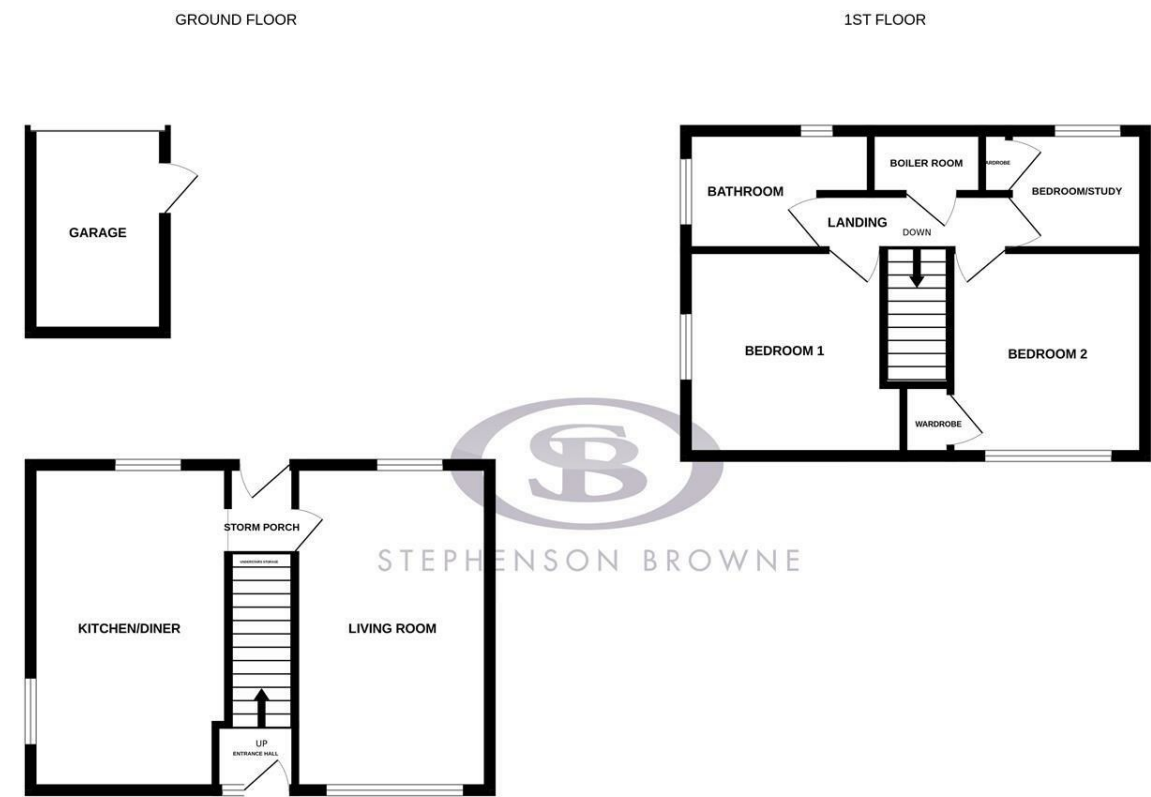


- Three-bedroom home in popular Brindley Ford.
- Two bedrooms with built-in storage/wardrobes.
- Bright living room with large front and rear windows.
- Spacious kitchen diner with ample cupboards and worktop space.
- Large airing/boiler cupboard on the landing.
- Modern bathroom with a walk-in shower.
- Private walled rear garden with paved and lawn areas.
- Off-road parking for two vehicles plus a garage.
- Side walkway with gate access to garden for convenience.

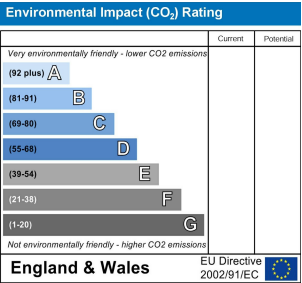
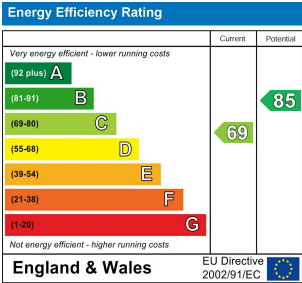


Floor Plan

Area Map



Whilst every attempt has been made to ensure the accuracy of the floorplan contained here, measurements of doors, windows, rooms and any other items are approximate and no responsibility is taken for any error, omission or mis-statement. This plan is for illustrative purposes only and should be used as such by any prospective purchaser. The services, systems and appliances shown have not been tested and no guarantee as to their operability or efficiency can be given.
Made with Metropix ©2026



Viewing

Please contact our Newcastle Office on 01782 625734 if you wish to arrange a viewing appointment or require further information.

NOTICE: Stephenson Browne for themselves and for the vendors or lessors of this property whose agents they are give note that: (1) the particulars are set out as a general guideline only for the guidance of intending purchasers or lessees. and do not constitute, nor constitute part of, an offer or contract; (2) all descriptions, dimensions, references to condition and necessary permissions for use and occupation, and other details are given in good faith and are believed to be correct but any intending purchasers or tenants should not rely on them as statements or representations of fact but must satisfy themselves by inspection or otherwise as to be the correctness of each theme; (3) no person in the employment of Stephenson Browne has any authority to make representation or warranty in relation to this property; (4) fixtures and fittings are subject to a formal list supplied by the vendors solicitor. Referring to: Move with Us Ltd Average fee: £123.64